

Sportsman - 201cc and over
 Vintage: 1984 and prior, twin shock, air cooled engine (exceptions for Yamaha single shock, no linkage).
 ATV Novice, Expert studded up to 350cc 2 stroke / up to 500cc 4 Stroke
 ATV Novice, Expert studded over 350cc 2 stroke / over 500cc 4 Stroke maximum 800cc 2 or 4 stroke
 ATV Exhibition, maximum 1200cc (nitrous oxide, superchargers, turbos not permitted)
 ATV non studded - no rider classification, 2 wheel drive, any displacement
 ATV non studded - no rider classification, 4 wheel drive, any displacement
 ATV machines may be entered in 1 class only, with the exception of the Exhibition class.
 Sidecars Traditional Configuration
 Sidecars Modified
 Classes awarding National Championship status will be determined annually.

(b) Indoor
 Youth up to 100 cc
 125 Novice
 250 Novice, Intermediate, Expert

(c) Displacement limits for classes will be as listed, plus 5%. This 5% is to permit overbores to compensate for wear. However, any engine within the total maximum allowable cc's shall be legal for the class regardless of how its displacement is obtained. (sleeving, stroking permitted) i.e. 250 class Will allow 250 cc + 12.5 = 262.5 cc.

(d) The #1 Plate for Ice Racing will be awarded to the 450 Expert Champion.

ICE RACING

STUDED CLASS

R-1 Classes

- (a) Youth / up to 150cc 4 stroke/100cc 2 stroke
 250 Novice, Intermediate, Expert / up to 250cc 4 stroke/200cc 2 stroke
 450 Novice, Intermediate, Expert / 251 - 450cc 4

R-2 Licences

Minimum age is the birthday of the rider/ maximum is the end of the year in which the rider reaches the age.

- Youth : minimum 11/maximum 14
 Expert and Speedway : minimum 15
 All others : minimum 13

R-3 Numbers

- (a) All machines shall be fitted with three number plates securely fastened to the machine, and bearing the rider's own CMA competition number.
- (b) Number Plate Colours:
 Expert - black numbers on white plate
 Intermediate - black numbers on yellow plate
 Novice - red numbers on white plate
 Youth - black numbers on white plate
- (c) ATV Machines must be fitted with 2 number plates on the front and on the left side of the machine, minimum 8" x 8". Numbers must be minimum 2" stroke.

R-4 Equipment

- (a) Snowmobile suits or enduro jackets may be worn.
- (b) Footwear permitted shall be:
 (i) Leather boots of a minimum height of 8" from the top of the sole.
 (ii) Competition snowmobile boots having a heavy rubber base with leather above and a steel toe and shank. This will not include a "Standard" snowmobile boot having a light rubber base with a nylon top and soft felt liner.
 (iii) Other footwear generally falling within the confines of (i) or (ii) providing it has a rubber boot, leather top, steel shank and toe.
- (c) Approved helmets must be certified by the manufacturer as meeting at least one of the following

(d) the wearing of a chest protector is compulsory (hard shell)

standards, and must have the original certification label(s) affixed (clearly visible/not painted over).

Accepted standards are:

- | | |
|-----------------|---|
| Europe - | ECE 22-05 (P, NP or J) |
| Great Britain - | BS 6658 Grade A (Road Racing) and Grade B (all other disciplines) |
| Japan - | JIS T 8133 : 2000 |
| North America | Snell M2005
Scorpion ECE 750 Series |

Effective January 1, 2012

- | | |
|---------------|-------------------|
| Japan - | JIS T 8133 : 2007 |
| North America | Snell M2010 |

- (d) (i) Machines must be fitted with a rear brake only (except Speedway). *NOT APPLICABLE FOR SPRINT*
 (ii) Front Wheel

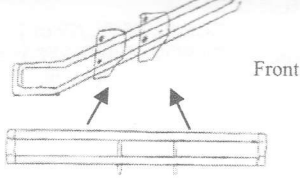
The left side of the front tire must be shielded so that no screws are exposed forward ahead of the forks above the axle plane.

Rear Wheel

The left side of the rear wheel must be shielded so that no screws are exposed.

- (iii) Machines must be fitted with an operative kill switch of the lanyard type.

(iv) All ATVs (except non studded classes) must be fitted with a rear bumper extending past the diameter of the rear wheels and curved toward the front of the machine. The bumper must be minimum 6" high, minimum 6" from the ground and firmly attached to the machine. Malleable steel or automobile exhaust pipe is recommended.



Frame Mounting Plates

(v) Sidecars are defined as vehicles with 3 wheels, making only 2 tracks on the ground in the direction of forward travel, with an attached sidecar, forming a complete integral unit. *OVAL ONLY*

For oval ice racing, the sidecar must be on the left hand side when sitting on the motorcycle.

(i) Traditional Configuration - a conventional motorcycle with 3 wheels making only 2 tracks on the ground in the direction of forward travel, with a rigidly attached, non articulating sidecar forming a complete integral unit.

(ii) Modified - a 2 wheeled motorcycle styled unit with 3 wheels making only 2 tracks on the ground in the direction of forward travel, with an attached sidecar that may be of nonconventional design, forming a complete integral unit.

(vi) The use of handlebars made from carbon, kevlar or any other composite materials is forbidden.

(e) Engine fuel must consist of gasoline defined as a petroleum fuel where specific gravity falls within the range .700 to .765 at 60 degrees F, and whose dielectric constant

will be permitted, provided the resulting mixture falls within the above values. Speedway Fuel reference Q-15(c). Supercharging by means of a device of any kind is forbidden. The direct injection of fuel is not considered to be supercharging.

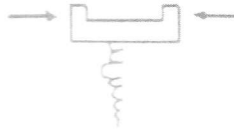
(f) (i) The height of the stud head and any incorporated washer(s) must not exceed 7.5mm *8.5mm*

(ii). Minimum width of head 2.5mm, maximum width of head 5/16". Screws that meet height and width requirements and have at least half of the screw at the top no deeper than 4.5 mm are acceptable

(iii) Production slotting or cutting which was originally intended to provide a method of inserting the screw (such as a screw driver slot or a Phillips driver depression) is permitted.

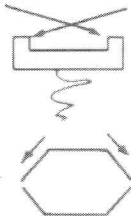
Multi insertion slots are not permitted, nor is cross cutting allowed.

(iv) Studs which comply with all of the shape and design factors shown in this rule book may be modified to the extent that filing (not grinding) across the flat surface of the head (including the production lip) will be permitted. The filing must be done on a plane parallel to the standard stud head contour, ie. at a 90 degree angle to the vertical line of the threaded portion of the stud.



May be filed in this direction only on the head flat - not on the sides of the head.

Illegal



Top view - Illegal

(v) Production studs may not have a washer or other device added under the head on the outside of the tire, regardless of the fact they could still meet the 1/4" height measurement.

(vi) The Referee shall have the authority to decide what constitutes a "legal stud" under this rule. His decision is subject to appeal to the Region Competition Committee after the race meet where the stud is found to be illegal.

(vii) On oval tracks front tires may not be studded on the right outside third, (does not apply to ATVs).

(viii) DBA 100 maximum.

R-5 Prizes

- (a) 250 Intermediate - 10%
 - 450 Intermediate - 10%
 - 250 Expert - 10%
 - 450 Expert - 40%
 - Open Expert - 20%
 - ATV Expert - 10%
 - All others Trophies only
 - (b) Indoor:
 - Youth and Novice - trophies only (min. 3 places)
- Other classes at organizer's discretion.
- (c) When an event is uncompleted through force majeure, the remaining prize money shall immediately be

OVAL ONLY FOR 2012

made available to the National Office for distribution as they decide.

(d) In the event of a dead-heat, the money for the two positions will be divided equally. The points for the higher position shall be duplicated. *(min 15" width)*

R-6 Course - SPRINT TWO-WAY 800-1500m

(a) The track shape may be oval or kidney; (oval only for national rounds) recommended minimum 400 meters in length and a minimum of 30 feet wide. This information shall be supplied on the sanction application. (not applicable to indoor ice races).

(b) Where the track is defined by snowbanks, some identifying markers (i.e. painted snow) must be used.

(c) There must be a minimum 20 meter zone around the perimeter of the outside bank of the track that is free of vehicles or structures.

R-7 Organization

(a) No rider's entry will be accepted after the first race or heat has started, except in extreme circumstances at the discretion of the Referee.

(b) No machines may be ridden in the paddock or pit areas, except as permitted by the Referee.

(c) At the discretion of the Referees, capacity classes may practice together. Rider classes may not be mixed for practice.

(d) Tires shall be marked (painted) at technical inspection to indicate that studs have been examined and are legal.

When riders wish to change tires during an event, they must present them for examination and marking.

All tires shall be inspected on the starting line before the start of the race, by an official, to assure they have the appropriate approval mark.

(e) When a decision by the Referee concerning stud

legality is overturned by the Sport Panel. Results of the event where the protest was filed will be modified accordingly. Prizes will be held until a decision is reached.

(f) Practising the day before is prohibited on a track to be used for a National Championship.

R-8

(a) The winners may be determined by a Final only, or a series of heats at the discretion of the Region Sport Panel (finals only at National Championship Rounds).

(b) The organizers shall have the right to require semi finals to be qualifying races even if all riders will transfer to the final

(c) When using a 3 or more heat structure, points for each heat shall be awarded to the top 10 finishers as follows: 15, 12, 10, 8, 6, 5, 4, 3, 2, 1. Ties in points shall be broken by the number of first places, second places etc. If still a tie, the best performance in the last heat shall receive the higher position.

R-9

(a) Maximum starters in the front row shall be determined by dividing the width of track in feet by 4.

(b) Where there are more starters (entries) in a class than the front row can accommodate qualifying heats must run to determine front row starters for the final. Qualifying heats may not contain more riders than the maximum permitted by R-9(a). Where riders qualify for a final from semis or consolations and there are available places on the front row, said riders are to be permitted a front row start.

(c) Grooming of the starting line and surrounding area by rider crews is not permitted. This includes the use of brooms, brushes, vacuums blowers or any other devices to remove snow shale or ice.

(d) Any rider leaving the track must re-enter at the first available opportunity, in a safe manner and with no

advantage gained. Penalties may be imposed relative to the manner of re-entry, by the Referee. Penalty may be the loss of up to 5 positions, or disqualification from the heat or race.

R-10

(a) A race is started when the starting signal is given. It is a false start when one or more competitors leave the starting line before the starting signal is given. When there is a false start, the rider(s) responsible shall be moved to a penalty line, 11 metres behind the original start line, for the restart. *SPRINT "lose 3 positions" no protests.*

(b) The only persons authorized to stop a race are the referee or his delegate and this is done by holding the red flag overhead. All competitors must stop racing immediately.

(c) Where a race is stopped, the positions of the riders at the last check over the finish line, previous to the stop signal shall be considered the finishing positions. The rider(s) responsible for the stoppage shall be placed last in the results.

(d) Where a race is restarted, the rider(s) responsible are placed last in the restart positions. When a scoring lap has not been completed, they will start behind the others.

(e) Where a race is restarted after the completion of one or more "scoring laps" and the full race is not to be re-run, riders shall be started in single file based on their positions on the last scoring lap.

(f) Non National Championship, Semi Final and non qualifying races which are stopped before the official distance has been run, will be counted if 50% of the event has been completed. The Referee will decide the length of any required rerun, and at what point a non qualifying race is considered completed.

R-11

(a) A race will be terminated by displaying the checkered flag when the required number of laps have been completed. The white flag will be displayed to indicate when there is one lap to go in the competition. The winner of the race is the rider who crosses the finish line ahead of the others when the checkered flag is displayed.

To be classed as a finisher of a race, a rider must:

(1) cross the finish line when the checkered flag is displayed

(2) cross the finish line within 2 minutes of the winner

(3) complete 3/4 of the laps of the winner rounded off to the higher number.

(b) Non-finishers are not eligible for awards or points.

(c) A rider must complete a given heat, semi or final using the same machine on which he starts that heat, semi, or final.

(d) A competitor may not enter or ride the same machine in two different capacity classes.

(e) A rider may use any motorcycle which has been officially entered in the event, has passed technical inspection and is legal for the class involved.

When more than one competitor uses the same machine, his/her official racing number must be displayed each time they participate unless an exception has been granted by the Referee prior to the race(s) in question.

INDOORS - SPECIAL REGULATIONS

R-20

(a) Starting area shall be on the infield (inside area) of the track except in final events where 2 start rows are used.

(b) Where the ice surface is surrounded by board walls, corner and end boards must be lined with hay bales, or the approved cushioning devices.